

LED TRAFFIC SIGNAL HEADS

The first thing that road users see at an intersection are the red, amber, and green traffic signal heads, which most of the time are referred as aspects. The commonly used aspect has a diameter of 300 mm. Other aspect sizes such as 200 mm and 100 mm are also available based on request. The traffic signal heads' casing is made of polycarbonate (black) resin and comes with visors, clamps or mounting brackets, and rubber ring accessories. We supply aspects with arrows, full, pedestrians, bicycles, and other symbols. Variations of colours exist and can be customized based on customers requirement.

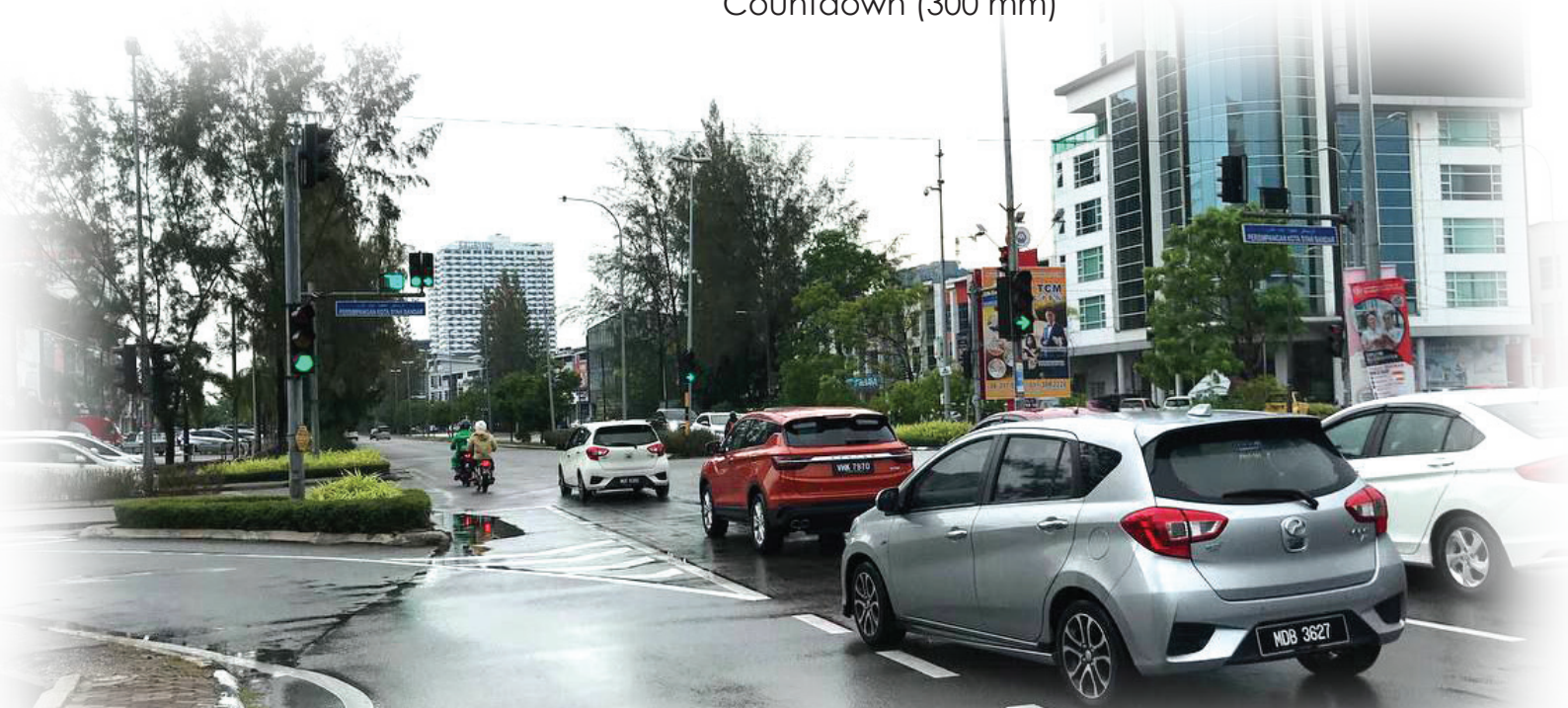


Key Features

- ✔ EMAL approved
- ✔ 3 years warranty (extendable up to 5 years)
- ✔ Certified to MS2478 standard (equivalent to EN 12368)

Options:

- ✔ Red , Amber, Green - Full (100 mm and 200 mm)
- ✔ Red , Amber, Green - Full (300 mm diameter)
- ✔ Red , Amber, Green - Arrow (300 mm diameter)
- ✔ Red , Green - Pedestrian (Wait / Cross) (300 mm)
- ✔ Red , and Green - Animated Pedestrian with Countdown (300 mm)

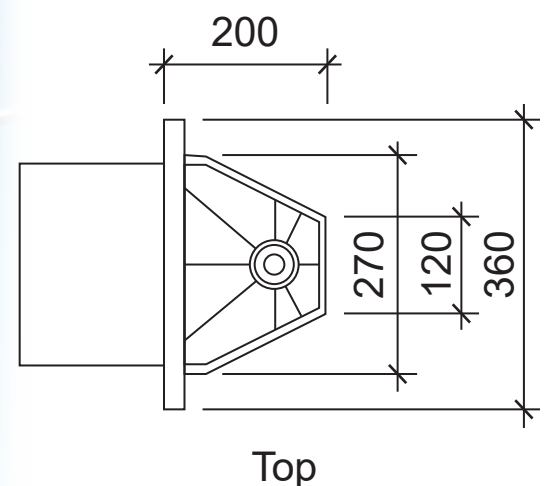
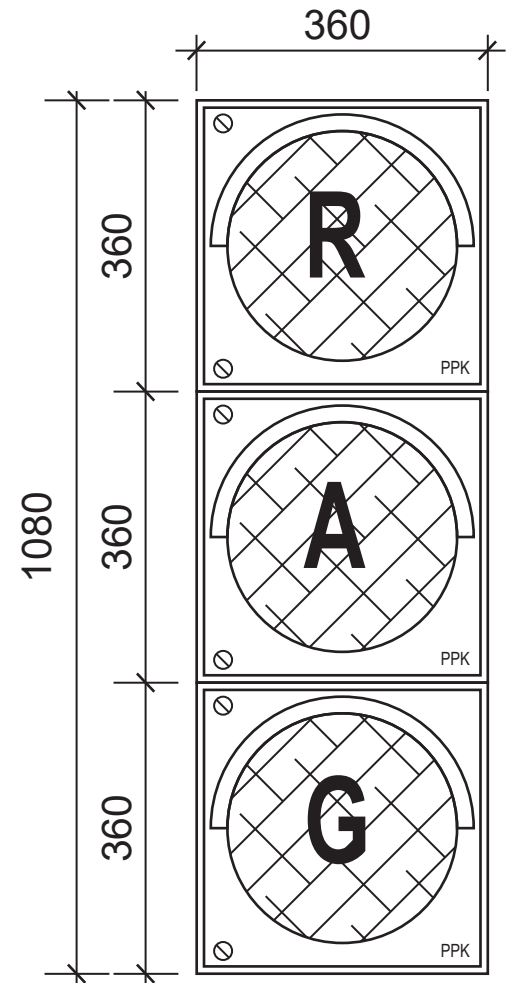


QUALITY POLICY

It is our commitment to provide the service with the highest standard of safety, quality and reliability that meet the specified requirements and expectations.


Technical Specifications



POWER SUPPLY	230 Volts AC \pm 10% and frequency 50 \pm 5Hz
STANDARDS	Certified to MS 2478 (EN 12368 Compliant)
OPERATING TEMP. RANGE	-10 °C to 74 °C
DEGREE OF PROTECTION	IP65 (LED module)
TURN OFF/ TURN ON TIME	75 milliseconds max
ELECTROMAGNETIC COMPATIBILITY	BS EN 50293:2012 Compliant
MINIMUM LUMINOUS INTENSITY (cd)	250 cd
DOMINIC WAVELENGTH (nm)	Red : 613 - 635 Amber : 584 - 597 Green : 494 - 538
LAMP CONFLICT COMPATIBILITY	Compatible with MATC Lamp failure and conflict detection system



DISCLAIMER

All information provided herein is for information purposes only and does not constitute a legal contract between PPK Technology and any person or entity unless otherwise specified. PPK Technology reserves the unconditional right to discontinue or make changes to product and product specifications without prior notice to improve the product's reliability, function or design.

 Wisma PPK, Lot 2354, Jalan Sungai Putat, 75350 Batu Berendam, Melaka, Malaysia.

 +60 6 317 6828  +60 6 317 6854

 ask@ppktechnology.com  www.ppktechnology.com

